

Salem Lutheran Church and School

eNews

June / 25 / 2020

We are students of Jesus ...

Rooted in Grace, Embraced by Relationship,

Engaged in Sacred Struggle, Inspired into Wonder

... called to serve God's World.



[DONATE](#)

From Checking/Savings or by Debit/Credit Card

For convenience use the
GIVE+ App
on your smartphone

**GIVE
PLUST**

[Printable PDF Giving Form](#)

[New! How to Sign up Instructions](#)

In This Issue:

Sunday Worship Live on
ZOOM

Multi-generational VBS for
Back Yards begins 7/6

Attn Youth! Important Synod
ZOOM event 6/28

Sunday Bag Lunch Program
in July

Weekly Organ Concert by
Dr. Jay

New Salem Justice Team

Synod Resources

Salem's Website: SalemLutheranGlendale.ORG

To submit information or photos for consideration in the eNews,
please email Laurie Mack

Deadline is TUESDAY of the week of publication

Grace and peace to you from God our Father and His Son Jesus Christ -

What is worship? How would you answer this question?

There are a variety of definitions and answers. Looking at the psalms of King David - there are many times that he proclaims the importance of worshipping God in spirit and in truth with our whole heart.

At some point, I would like to do a sermon series on this question...there are so many ways for us to understand the importance of worshipping God and our relationship to God through worship.



For the past few months we have been unable to worship in-person. BUT, we have never stopped worshipping together. Through the gift of technology we have been able to continue worshipping through the ZOOM platform and on occasional FB lives. Although we like to be in-person, I believe we have found an acceptable way to continue worshipping together. If you haven't noticed, we have also found a way to include people who may not be able to come to in-person worship but can come on-line (shut-ins, people in other states and countries, parents with newborns, and the list goes on). We have been able to connect to people in a new way and continue to share our worship.

I believe that on-line worship for Salem - in one way or another is here to stay. This week, some of Salem's members had a ZOOM meeting to start preparing for how we can continue on-line worship even when we are able to return to in-person worship. There are many exciting ideas that are being considered.

With that being said...we are all wondering when we will be able to return to an in-person model of worship - aren't we?!

Every few weeks, the Executive Committee and the Church Council discuss this topic. It is important for us to remember that we are following guidance from the church synod leadership and that we are complying with city, county, state, and federal guidelines that establish the rules of when and how we can resume in-person worship. At this point, I am not aware of any ELCA church in our synod that has resumed an in-person worship service. The current restrictions are severe, the rules are onerous and the potential negative consequences are risky.

The process of getting back to in-person worship or our traditional worship service is going to be a journey and will not happen in the "flip of a switch." We are planning on taking baby steps so that we can safely come back to in-person worship together. Our first step does not have a start date or final approval - but is being planned. We will continue to have the 10am Sunday morning ZOOM worship but at some point in the future - we will add a brief Sunday evening prayer service. This will be an outdoor worship service held in the church courtyard or on the school playground. As we know more, I will share more...for now - please continue to worship with us on Sundays at 10am on ZOOM and continue to invite your friends. We are a church - not a building - and this is a great way for us to live that out!

God bless you! I look forward to seeing you at worship. This Sunday we will continue to talk about the book of Samuel and focus on King David.

Peace,
Pastor Amie

Salem Worship Opportunities

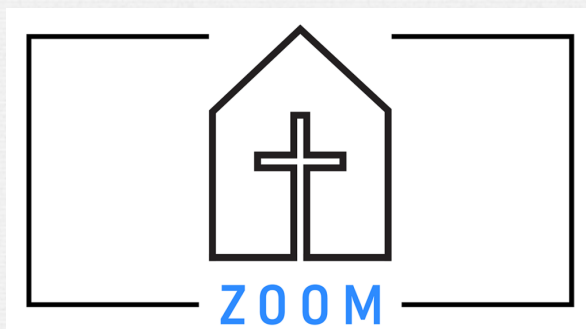
*Although we are all respecting the important social distancing
that is necessary during a pandemic,
we are NOT spiritually distancing!
Please continue to join us at weekly worship!*

Live on ZOOM!

9:45-10 am - Please join us before worship!



SUNDAY WORSHIP at 10:00 am



[ZOOM Link](#)

Meeting ID/passcode: 818 243 3193

Sunday, June 28

THE STORY Chapter 11 - The Book of Samuel and King David

[ELW 807 Come, Thou Fount of Every Blessing](#) (printable PDF)

[WOV 722 Hallelujah! We Sing Your Praises](#) (printable PDF)

10:45-11 am Breakout Small Groups



ZOOM Help!

Are you having trouble with ZOOM?
Please call
our member, Corky Gregson.
He is our new ZOOM coach!!

310-999-5081

ZOOM Phone Instructions for worship

ZOOM dial-in phone number: (669) 900-6833
Salem meeting ID (to be followed by pound-key):

818-243-3193 (do not dial "1" before this ID number)

*6 - toggles mute/unmute

*9 - raise hand (to be called on and unmuted by administrator)



THE STORY

THE BIBLE AS ONE CONTINUING STORY
OF GOD AND HIS PEOPLE

Please keep checking Salem's

YouTube, Facebook and Instagram

*You will find online events for children... Bedtime Bible Stories
and School Chapel Recordings*

*For adults... Worship Service Recordings, Announcements,
Links of interest, Special Music and more!*

YouTube Channel: <https://bit.ly/390X6Cu>

Church Facebook: www.facebook.com/groups/salemglenale/
School

Facebook: www.facebook.com/salemlutheranschoolglenale

IG: @salemlutheranchurch_glenale





A Blessing
to announce!

Owen Hue Albers

Born June 22, 2020

*Congratulations and our love to
Lauren, Jake and big sister Bryn*

Starting July 6, 2020

VBS for Back Yards!

All Ages can participate!!

Instead of gathering every day for VBS, you'll get an email every week with VBS activities for the whole family to do together at home, on their own schedule and in their own space. Even Grown-ups can recapture the wonder of a childlike faith through Bible stories, music, crafts, outdoor activities, and adult size reflection questions. Included is a private Facebook group to share sing-alongs and post photos of our crafts with everyone else at Salem Lutheran!

**VBS FOR
BACK YARDS**

OLD TESTAMENT FAVORITES



Once a week for Five Weeks
Multi-generational activities emailed
to each registered family.

Fee \$29/family: [REGISTER & PAY](#)

Questions Janet Suzuki suzuki.janet@gmail.com

ATTENTION SALEM YOUTH!



SOUTHWEST CA SYNOD YOUTH

AIR IT OUT!

JUNE 28, 2020 | 7:30PM

ZOOM MEETING ID: 305-207-0037

JOIN US FOR A CONVERSATION
AROUND RACIAL INJUSTICE

HOSTED BY HIGH SCHOOL STUDENTS
FOR HIGH SCHOOL STUDENTS

FOR MORE INFO
PLEASE CONTACT YOUTH@SOCALSYNOD.ORG



Sunday Lunch Program in July Please help with Sandwiches!

Salem is continuing to serve those who participate in the Sunday lunch program. We will be serving each Sunday in July. Because of the virus we will be handing out bag lunches on a table in Salem's upper courtyard. The Social Outreach Committee is coordinating this effort.

We are requesting that 2 families or organizations sign up each Sunday to make 12 sandwiches each for a total of 24 sandwiches to be given to our guests. The breakdown for the sandwiches would be 9 tuna, 2 peanut butter and jelly and 1 cheese and tomato on the bread of your choice and placed in a closed air tight sandwich bag.

The sandwiches should be brought to the courtyard by 11:45 am as lunch is served from 12 to 1:30 pm. Please bring an 8-10 ounce drink (not water) for each sandwich. Other items for the bag lunch will be provided by Social Outreach.

If you can help please contact Val Zografos
at 818-790-5698 or vzografos@aol.com



Steward of the Month

Karil Starleaf - Social Outreach

Social Outreach committee proposes opportunities for working and giving to people outside of our church who need assistance and in so doing, witness to the Gospel.

In addition, the committee decides where the Alms box funds is used to help others outside of the church.

Our committee of 4 members meets once a month and reviews on-going projects with the aim of organizing or starting new projects. Some suggestions are brought to the committee from members of the church.

Projects usually handled by this committee are:

- Sunday Homeless lunches in July and December, 35-70 attend
- Adopt-A-Family from the Salvation Army for Christmas gifts for needy families
- African Team ministries sell their work at church
- Deciding which organizations shall receive Alms donations
- Family Promise meeting attendance and participation
- Glendale and Burbank's organization that helps get homeless families off the streets with help with work, housing, food, etc...
- Food or fund collection for local food pantries: Salvation Army, Grace Food Shelf (Hill Ave. Grace Lutheran), Lutheran Social Services, etc...
- Cold weather shelter dinners
- Hosting our China missionary when she returns to the U.S. for the summer

The youth, scouts and families in the church have helped support these events!

In Jesus's service,
Karil Drake Starleaf

Weekly Organ Concert

performed by Dr. Jay Brunot

Enjoy a weekly informal
30 min. concert
available on Fridays at 7:00 pm

**Recorded and posted on
Salem's YouTube and Facebook**





**"Learn to do good; seek justice.
Defend the oppressed."**

Isaiah 1:17

Salem is starting a Social Justice Team. If you would like to be involved, please contact Kirstyn Bonneau, Anastasia McGee, Libby Denton or the church office.



**Please email your prayer requests to
this confidential mailbox**

prayers@salemglendale.org



Urgent Requests for Hunger Programs!

The following programs are in need of food donations:

Drop Off non perishable food, clothing & small household items

Lutheran Social Services

7400 Tujunga Ave., North Hollywood 91605

Call for drop off times 818-901-9480

If more convenient, you may also drop your donations off on Karil Starleaf's front porch and she will deliver them - 1329 Western Ave., Glendale 91201

Also if you have extra fruit on your trees or garden veggies, it can be donated to local food programs - Contact Karil Starleaf and she will pick it up! Oranges are especially great for vitamin C.

Provide 10-15 Sack Lunches

City of Glendale Parks & Shower of Hope

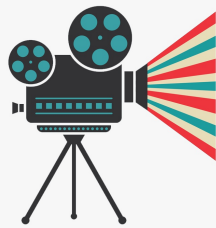
This is a mobile shower program that provides a weekly shower to the unsheltered community homeless. They would also like to provide the lunches for their guests to take with them.

Please call Ivet Samvelyan, Glendale Community Services Manager to schedule a day to bring the sack lunches 818-548-3720

For questions contact Karil Drake Starleaf, Social Outreach 818-243-9573 or karildrake@yahoo.com

Request from the Archive Committee

Cleaning out your home? The Archive Committee is looking for the following annual reports (2000, 2001, 2003, 2004, 2005 & 2007) for our library. If you have one and would like to donate it to our library, contact Mary Seekins 818-526-7728. We would also be happy to take any other memorabilia on Salem that you would like to share.



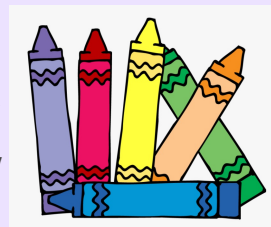
Please go online to our new website and view the **Salem member interviews from our Archives:**

www.SalemLutheranGlendale.org... click on Home... History of Salem.

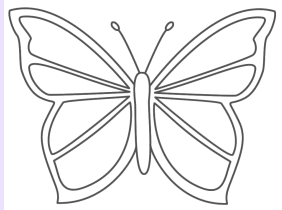
You will enjoy some old friends and recognize some young members still with us!

BUTTERFLY PROJECT

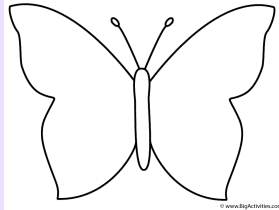
As Christians we have often used the butterfly as a symbol of the resurrection. Around the world people view the butterfly as a symbol of hope, new life and change.



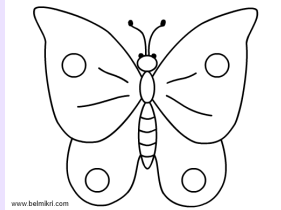
Please take time to color one or more of these butterfly PDFs. You may print them out.



Butterfly 1



Butterfly 2



Butterfly 3

When the quarantine is over and it is possible, we ask that you bring them to church or mail them so that a display can be made in our outside garden. This will help Salem to show our community: we celebrate the resurrection of Jesus Christ, we have endured the hardship of quarantine and we have hope in a renewal of our ministry in and around Salem. Be creative! Have fun!

LUTHERAN RETREATS, CAMPS & CONFERENCES

El Camino Pines
Luther Glen Farm

**Camp Worship
Videos & Virtual
Campfires**



Although for the safety of campers and staff, Day and Beach camps through El Camino Pines and Luther Glen Farm have been cancelled, you can still enjoy a little camp magic! LRCC is offering a Children's Message and Camp Song based on the ELCA Lectionary Year A calendar every week so your church members can experience the joy of camp from their home. For the foreseeable future, LRCC will continue creating virtual campfires, and on Saturday July 25, their Eleventh Annual Summer Banquet will move online!

If you are able, you can help out LRCC with a donation.

[Lutheran Retreats, Camps and Conferences](#)

Fortunately, a PPP loan, has allowed LRCC to rehire most staff and summer leadership team, enabling them to improve facilities at El Camino Pines and grow food at Luther Glen Farm.

Until it is safe to gather at camp again, LRCC's focused prayers are with the women and men on the front line in this struggle.

Attention! Salem Keyholders and coming on campus

During this Covid time, if you have a key, we are requesting that you do

not use it without permission. Please contact Laurie or Pastor Amie if you have a need to enter any of the church doors. We are keeping a record of who enters the campus in order to abide by sanitation recommendations. This is very important. Thank you!



For Synod resources, events, ELCA Churchwide news, and communications go to socalysynod.org

You may sign up to receive important email notices including links to Synod Worship and Bible Study, as well as the Synod newsletter "Synews" and many other ZOOM opportunities.

Go to socalysynod.org, sign up is at the bottom of the home page.

Give Online - It's fast and easy!

[CLICK HERE](#)

You may set up recurring donations to the general fund, capital appeal, or make a one-time payment online securely. **You now have the option to give by Dedit or Crebit Card** as well as from your Checking or Savings.

Now you can Download the GIVE+ App on your smartphone through the App Store or Google Play (search for Salem Lutheran Church, Glendale CA and follow the prompts. You will need a Vanco account. If you already have an account, simply log in with it in the GIVE+ App. You do not need 2 separate accounts).



Another option for signing up or making changes is simply filling out the paper form. Print and mail it to the church office. [Printable PDF Giving Form](#)

If you need help signing up online [New! How to Sign up Instructions](#)



Amazon will donate 0.5% of your eligible purchases to Salem Lutheran Church whenever you shop at AmazonSmile. Thank you!
[CLICK HERE](#) to get started

Turn on AmazonSmile
in the Amazon app to
generate donations.

amazon smile



AmazonSmile customers can now support Salem Lutheran Church in the Amazon shopping app on iOS and Android mobile phones! Simply follow these instructions to turn on AmazonSmile and start generating donations.

1. Open the Amazon Shopping app on your device
2. Go into main menu of the Amazon Shopping app and tap into 'Settings'
3. Tap 'AmazonSmile' and follow the on-screen instructions to complete process

If you do not have the latest version of the Amazon Shopping app, update your app. Click [here](#) for instructions.

The Rev. Amie Barsch Odahl
Pastor

Pamela Perry
School Principal

Laurie Mack
Parish Administrator
Dr. Jay Brunot - Organist/Pianist
Hans Ludwig - Adult Choir Director
Beth Chrzan - Cherubim Choir
Debbie Kahwaji - Nursery Attendant
Daniel Urrutia - Property Care

**Salem Lutheran Church and School
Council**

President - Dave Weller
Vice President - Lauren Kaye
Secretary - Charlotte Walker
Treasurer - Brant Reed
School Board - Jim Pietsch
Worship and Creative Arts - Dave Siebels
Christian Education - Elizabeth Hall
Social Outreach - Kari Drake Starleaf
Member Care - Sue Siebels
Facilities - Bob Camacho

Salem Lutheran Church and School

1211 N. Brand Blvd., Glendale, CA 91202

818-243-3193 Church ext. 7100 / School ext. 7200

www.SalemLutheranGlendale.org

Transitional Kindergarten through 8th Grade - Call for a tour

www.SalemLutheranGlendaleSchool.org

 Forward to a Friend

